



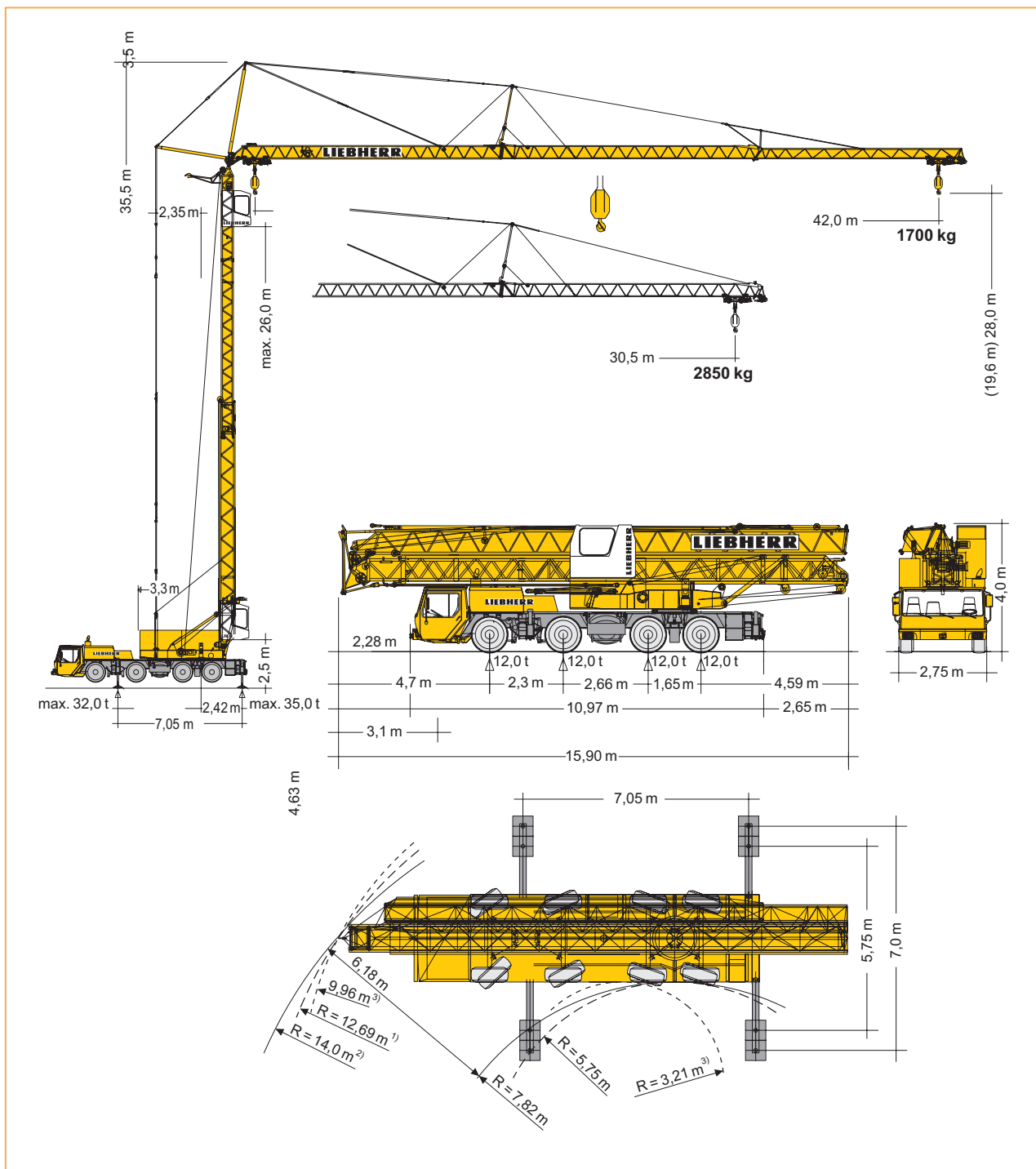
Sbraccio massimo: 42 m
Capacità di sollevamento massima: 8'000 kg
Altezza di trasporto massima: 4 m
Larghezza di trasporto massima: 2,75 m
Tensione di servizio 400 V, 50 HZ
Velocità massima su strada 80Km/h
Altezza autonoma massima sotto gancio (freccia orizzontale): 28 m
Altezza autonoma massima sotto gancio (braccio inclinato 30°): 48 m
Peso totale: 48'000 kg

MK 80 02 - 17


Autogru




MISURE - INGOMBRI



SBRACCIO E PORTATA

m	m / kg 	m / kg																		
		6,0	8,0	10,0	12,0	14,0	16,0	18,0	20,0	22,0	24,0	26,0	28,0	30,5	32,0	34,0	36,0	38,0	40,0	42,0
42,0	3,5 - 10,35 8000	8000	8000	8000	6870	5850	5080	4480	4000	3600	3270	2990	2750	2500	2360	2190	2050	1920	1810	1700
30,5	3,5 - 11,66 8000	8000	8000	8000	7770	6620	5760	5080	4540	4100	3730	3410	3140	2850						

BRACCIO INCLINATO

m	m / kg 	Auslegerstellung 30° / Elevated jib 30° / Flèche inclinée 30° Braccio inclinato a 30° / Pluma inclinada 30° / Hoofdgiekstand 30°															
		6,0	8,0	10,0	12,0	14,0	16,0	18,0	20,0	22,0	24,0	26,6	28,0	30,0	32,0	34,0	36,6
42,0	3,5 - 8,0 6000	6000	6000	5200	4580	4080	3680	3340	3050	2800	2590	2340	2240	2090	1960	1840	1700
30,5	3,5 - 12,0 6000	6000	6000	6000	6000	5260	4660	4180	3790	3450	3170	2850					



PROCEDIMENTO DI MONTAGGIO

